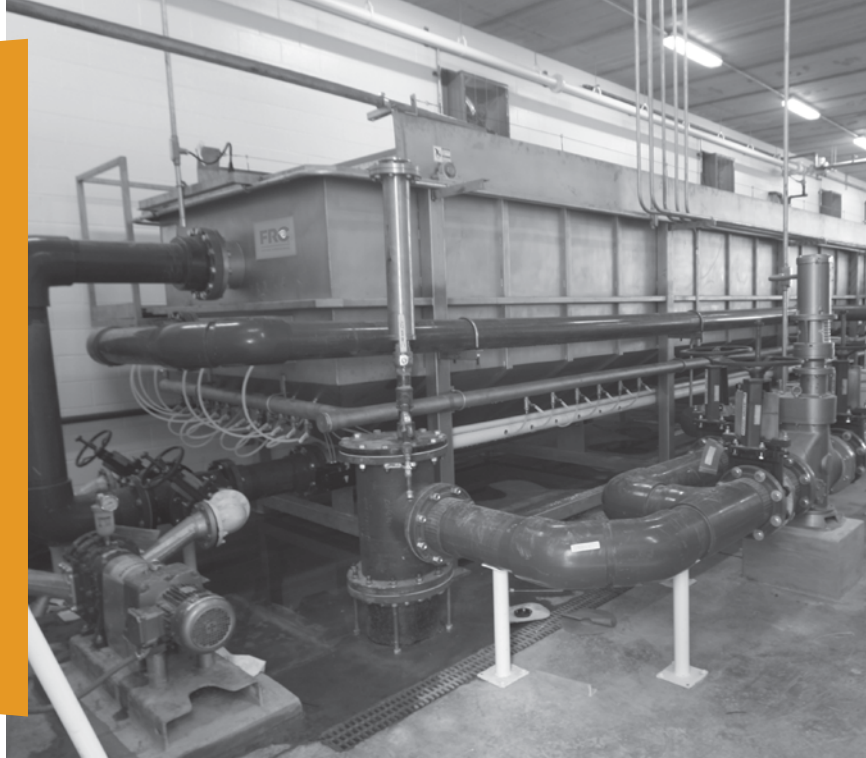
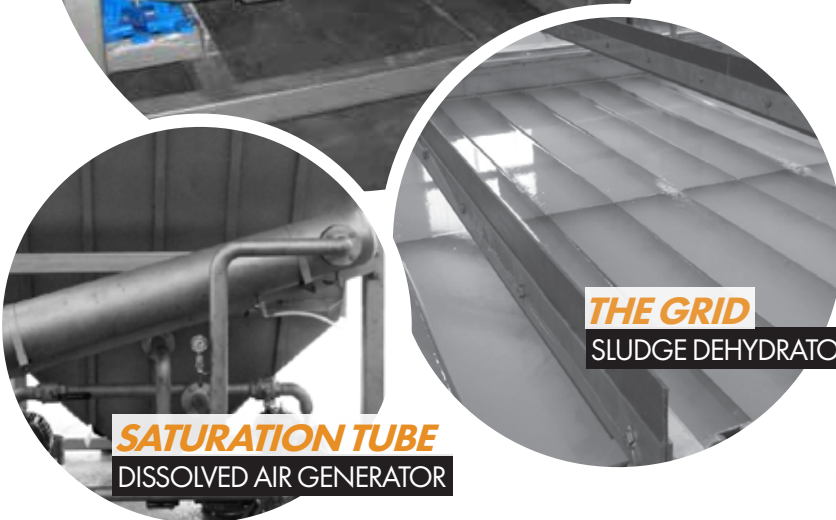


# PWL SERIES DAF SYSTEM

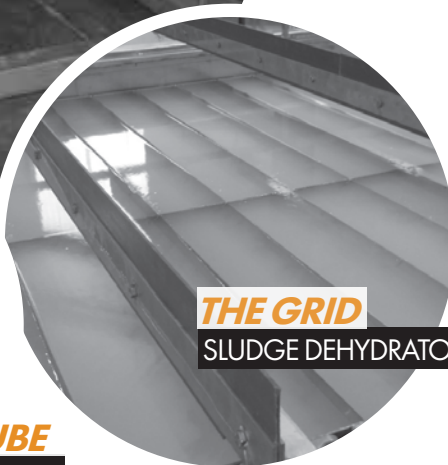
**flotation** (flō -'tā - shən) // **noun** // Fr. 19c. **flotation**;  
1. the act, process, or state of floating 2. the separation of  
particles according to their relative capacity for floating on a  
given liquid



**ANSI RECYCLE PUMPS**  
CONTINUOUS OPERATION



**SATURATION TUBE**  
DISSOLVED AIR GENERATOR



**THE GRID**  
SLUDGE DEHYDRATOR

FRC's PWL low-built dissolved air flotation system is designed for flows with high solids loading. With **Dual ANSI Recycle Pumps** for continuous operation, **The Grid**, and a unique air dissolving **Saturation Tube**, PWL units are versatile, efficient, and reliable - day in and day out.

As with all FRC engineered solutions, the PWL series is designed for ease of operation. Automated controls and instrumentation remove process uncertainty and reduce the opportunities for user error.

PWL units pair perfectly with F-Series pipe flocculators and can be delivered in a turn-key fashion including controls, pumps, chemical feeders - all pre-wired, pre-plumbed and skid mounted.



201 Lincoln Boulevard  
Middlesex, NJ 08846

**(732) 469-4540**

[www.psiprocess.com](http://www.psiprocess.com)

Employee Owned



# PWL DETAILS

1. Skimmer Flights
2. Float Discharge
3. Wastewater Inlet
4. Dissolved Air Dispersion Manifold
5. Settled Sludge Outlet
6. Saturation Tube
7. ANSI Recycle Pump



## PWL MODEL SPECIFICATIONS

Model	Flow (gpm)	Free Area (sqft)	Dry Weight (lbs)	Wet Weight (lbs)	Dimensions (LxWxH)
PWL-5	20	14	4,000	9,930	8'11" x 4'6" x 8'4"
PWL-10	45	27	4,410	15,190	9'4" x 7'10" x 8'4"
PWL-15	65	48	5,280	22,510	13'4" x 7'10" x 8'4"
PWL-30	130	87	6,800	30,070	19'5" x 7'10" x 8'4"
PWL-50	220	126	8,320	38,050	25'6" x 7'10" x 8'4"
PWL-65	280	150	10,950	44,270	28'11" x 7'10" x 8'4"
PWL-80	330	166	11,050	46,710	30'9" x 7'10" x 8'4"
PWL-100	430	205	11,470	54,760	36'9" x 7'10" x 8'4"
PWL-120	520	244	13,760	63,660	46'9" x 7'10" x 8'4"
PWL-80W	520	260	14,600	69,400	30'9" x 11'2" x 10'5"
PWL-100W	640	320	18,130	124,702	36'10" x 11'2" x 10'5"
PWL-120W	830	415	22,660	149,860	46'9" x 11'2" x 10'5"
PWL-160W	1,020	510	26,200	185,500	56'9" x 11'2" x 10'5"

\* Consult FRC as values may vary based on process circumstances

